

## Paramount ME "Parts" Photographs - from Software Bisque's website

During the design phase of the Paramount ME, we were continually faced with manufacturing decisions that boiled down to "cheaper and quicker" vs. "better." When you use the Paramount GT-1100ME, you will be glad that the "better" criteria was always used. This philosophy has resulted in a truly superb instrument (at the expense of timely production).

We're currently producing parts as quickly as possible, and the exact ship date is dependent on numerous factors. We are "over the hump" on production, but do not have a "completed production unit" to show yet (and the prototypes just don't do justice). Following is a sampling of what is has come off the production line so far.

NOTE: MOST PARTS SHOWN ARE MACHINED, *UNANODIZED* SURFACES TO PROVIDE DEPTH AND CONTRAST.



## Right Ascension and Declination Gears





### **Unanodized wedge, side plates and miscellaneous components**

Beyond great pointing and tracking performance, we added "transportability" to the design goal. Every effort has been taken to make the ME both light and sturdy. The result? A mount that can carry twice its own weight with extreme rigidity. Numerous webbings were added to the design to reduce damping times, even with heavy loads.



### **Unanodized adjustment knobs**

The Paramount ME uses custom made knobs for polar alignment adjustment and attaching the mount to the pier. These knobs can be hand-tightened but also allow for a hex wrench when additional torque is required. Each knob is manufactured with a perpendicular thrust surface and fitted with a Delrin® bearing surface for smooth operation when tightening AND loosening.



We reduced the number of electronics boards and cables in the control system — less things to go wrong. And the ME's "through the mount" cabling cleans up the mount, making it more reliable for robotic use. We have even provided extra room for additional custom cabling.



No shortcuts. Is it important that something as simple as the counterweight safety knob is fitted with a Delrin® washer to minimize binding? We think so.



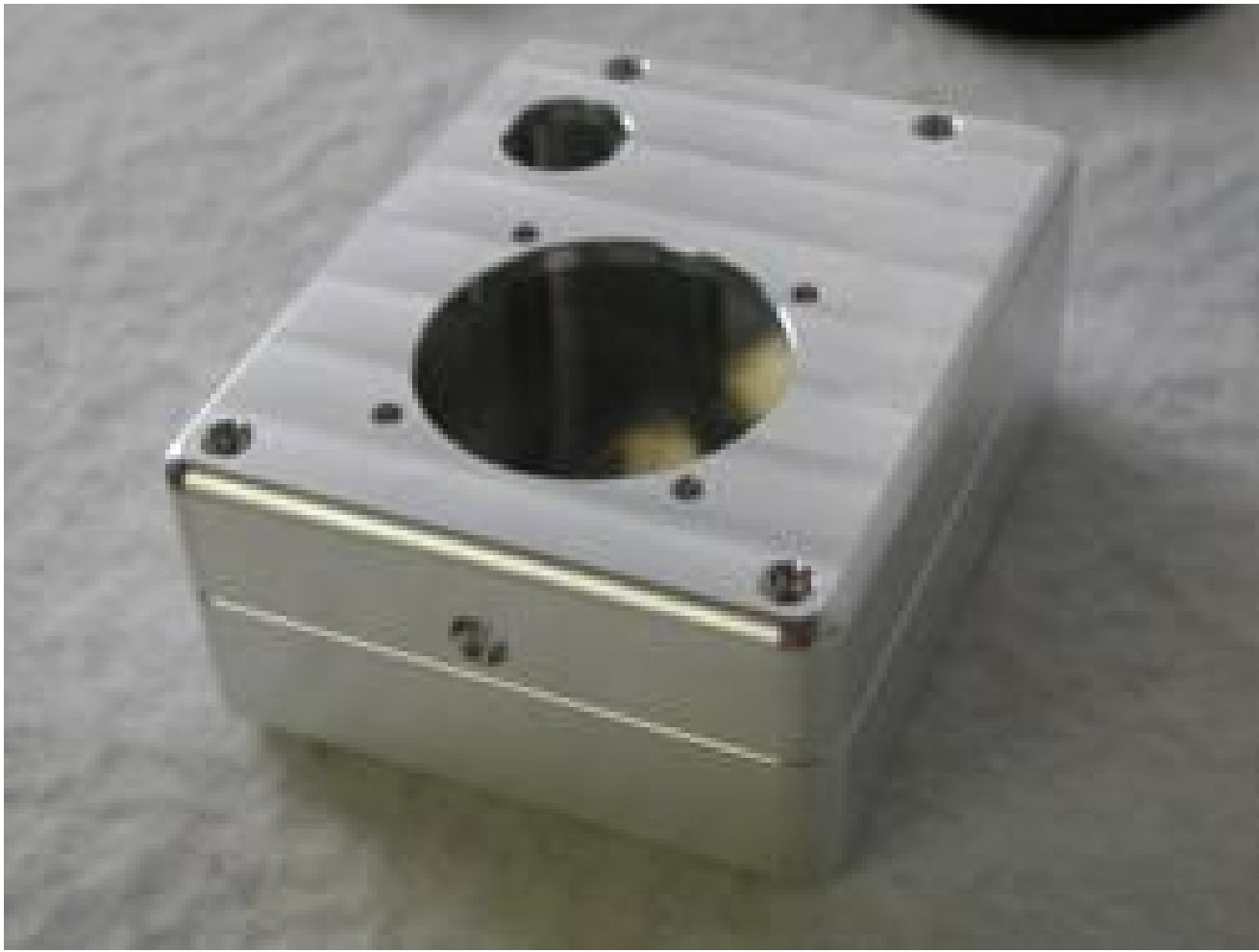
Better tools result in better design. With the added capability of Software Bisque's CNC production facility, even the counterweights rise in form and function. The sleek ergonomic design has numerous user-friendly features.



Unanodized rear right ascension plate. Note how every effort is made to reduce the weight of each part, while retaining maximum rigidity.



As stated previously, we're *mass producing* parts.



A weak plastic hand-paddle for the Paramount ME? NOT! The ergonomic aluminum joystick case is designed to last for years.

All content on this page is Copyright © 2001 Software Bisque, Inc. All rights reserved.